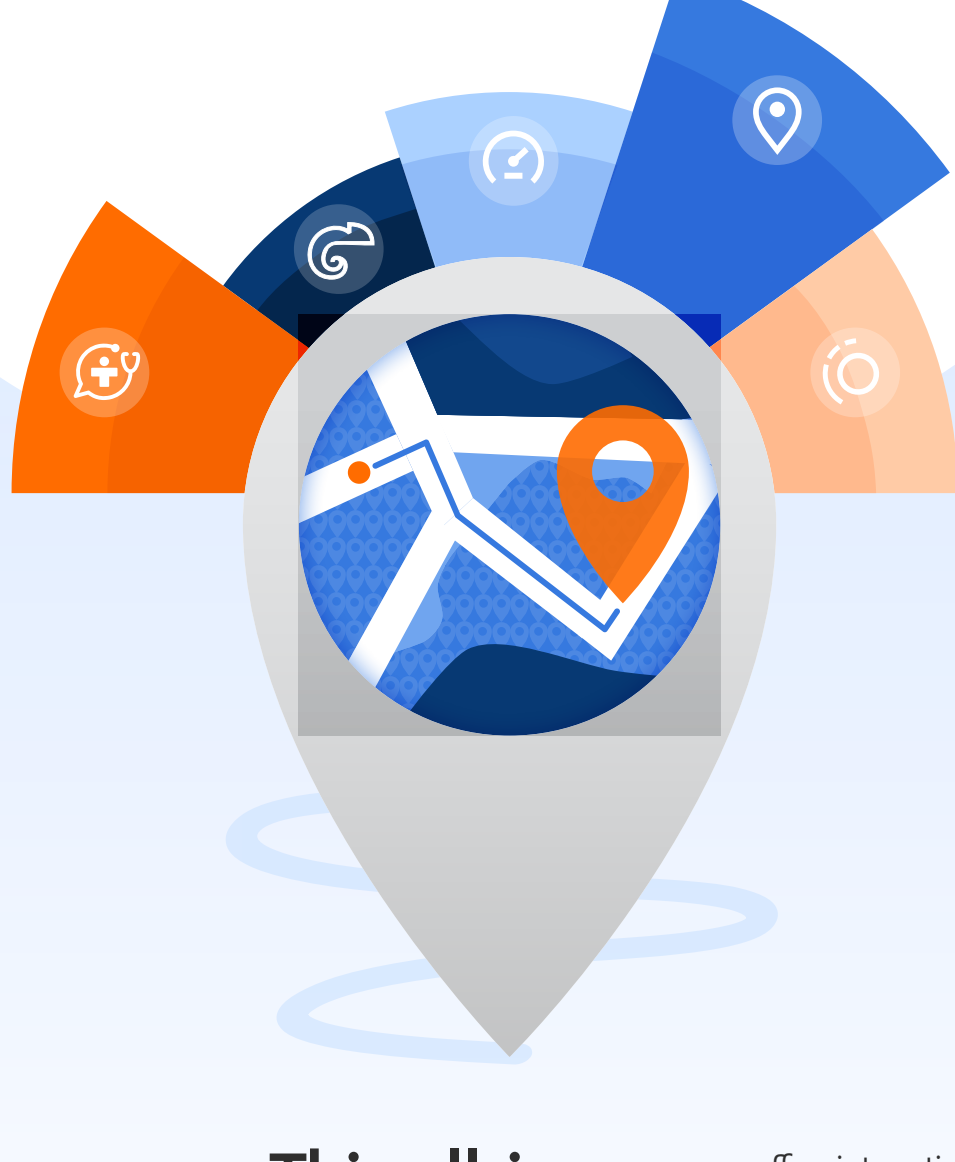


Sherpath® Vantage

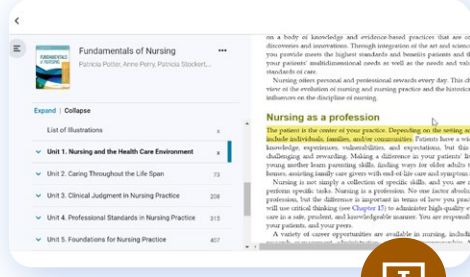


Everything you need to deliver a highly effective, interactive course experience — **all on a single platform**

This all-in-one, course-based solution

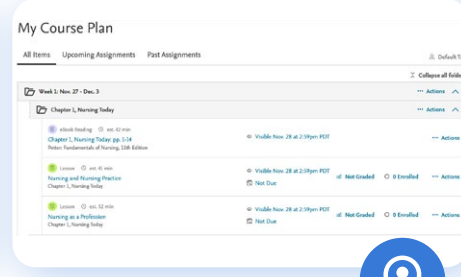
offers interactive content and a variety of assignment types, teaching resources, and learning and quizzing tools. It's everything you need to help build students' knowledge and strengthen their nursing competency and clinical judgment. Plus, Sherpath Vantage's simple, seamless, and supportive environment saves you time and provides meaningful learning analytics to drive improved course outcomes.

Here's what you get with Sherpath Vantage:



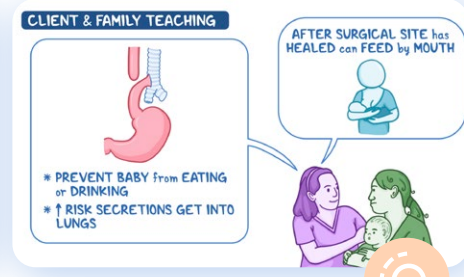
Elsevier eBook

the most trusted health science content available



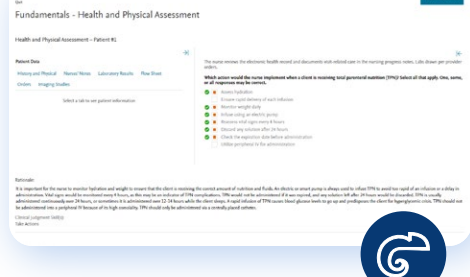
Sherpath®

comprehensive digital lessons and assessments



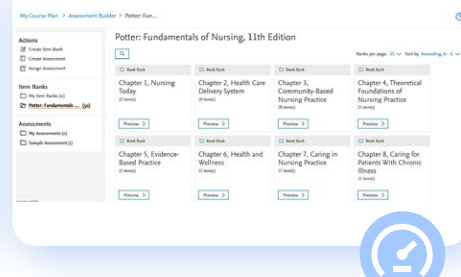
Osmosis® Videos

bite-size, illustrated health education videos, available for select collections



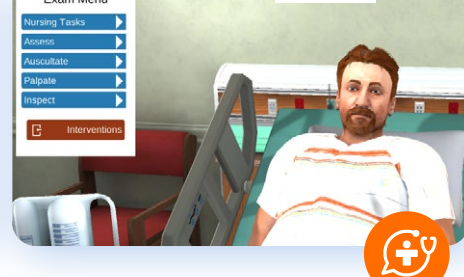
Elsevier Adaptive Quizzing (EAQ)

dynamic, personalized quizzes, plus case studies for the Next Generation NCLEX®



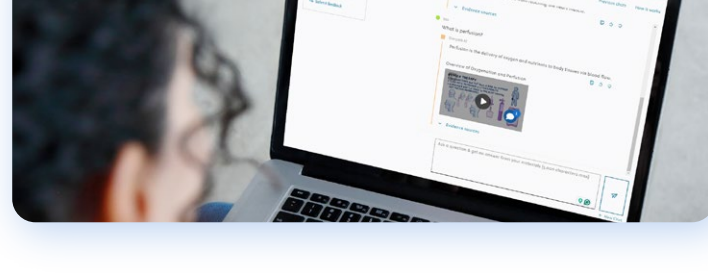
Enhanced Test Banks

powered by Elsevier's Assessment Builder to author and administer both traditional and Next Generation NCLEX question types, available for select collections



Shadow Health®

high-fidelity, screen-based simulations



Sherpath AI

a chat tool that generates personalized answers to questions, sourced solely from Elsevier's vast library of trusted, evidence-based content.

Here are some examples

of how you can use Sherpath Vantage in your course:

1 Pre-Class

Build student knowledge to ensure they come to class prepared and can demonstrate an understanding of the key nursing concepts that form the foundation for their success.

Assign **Sherpath lessons** prior to class, prioritizing lessons that help meet course objectives:

- **Osmosis videos** can be found inside lessons; this brings into focus challenging or complex content, or content that is critical for undergraduate nursing students to master.

Read with a purpose! Have students complete the **Sherpath lesson** first and write down three topics they feel are important to explore further. They can then focus on reviewing those three topics in the **eBook**.

Use the **eBook** to engage students as they read, providing instructor highlights, comments, or focused questions. Encourage students to create flashcards within the eBook to assist with building knowledge.

Use **Sherpath AI** to assist with class preparation by requesting an engaging class activity centered around the topic area.

Assign a pre-class quiz using **EAQ** to ensure students come to class ready to dig deeper!

Assign a **Shadow Health Digital Clinical Experience® (DCE)** for students to complete prior to class/sim/clinical. Have them develop a care plan for this patient and bring for discussion.

Assign **Osmosis videos** for chapters designated as required reading. This highlights broad, "need-to-know and understand" themes covered in the chapters.

2 During Class

Continue to build student knowledge while encouraging them to start applying clinical judgment through content-based scenarios and interactive, immersive technology.

Connect the classroom to clinical by discussing students' interactions with their assigned **Shadow Health** patient, drawing upon their shared experiences for more meaningful debriefing.

Review category strengths and weaknesses from the **Practice Readiness Dashboard** and identify strategies for improvement as a class.

Students can reinforce their understanding by asking **Sherpath AI** questions related to the lesson.

Watch an **Osmosis video** that explains the application of the NCSBN® Clinical Judgment Measurement Model cognitive skills, alongside the nursing process, relative to the prioritized exemplar highlighted in the text and using a case study format.

- In groups, have students create a concept map or teaching plan.

In the **Sherpath** student view, unfold a **Next Generation NCLEX® (NGN) case study** with new item types from the assignment choices located in **EAQ**. Provide guidance to students as they encounter the new item types, giving them exposure to the new items and enhancing clinical judgment — it's a win-win!

Gauge students' mastery of the material and their ability to apply clinical judgment with formative assessment, insightful performance data, and resources perfect for remediation.

Assign a **Shadow Health DCE** to give students the opportunity to apply new knowledge and understanding of the content. This will continue to build their clinical judgment skills and provide them with immediate, detailed feedback on their performance.

Review performance reports in the **Sherpath Vantage dashboard** for all assignments and address cohort weaknesses during class time.

Leverage **Sherpath AI** to recommend alternative assessment methods beyond traditional test items. For instance, ask "How can I assess student competency related to social determinants of health and diabetes?"

Students and instructors can use **EAQ** as a formative assessment tool.

Monitor progress weekly. Early identification and intervention of "at-risk" students is key:

- Consider additional **Sherpath lessons** or **EAQ assignments** for remediation, as needed.

Create and administer summative assessments using **Enhanced Test Banks** to effectively gauge students' content mastery and prepare them for the NCLEX.

Additional tips

for student engagement within Sherpath Vantage:



Most of the **PowerPoint®** slides contain case studies that you can use as guided questions for class discussion.



Review the lowest-scoring questions and correct answers from the **Lesson Performance Report** to facilitate class discussion.



Review the **TEACH for Nursing lesson plans**, found in the instructor resources, for case studies and additional ideas to engage students in all course settings.